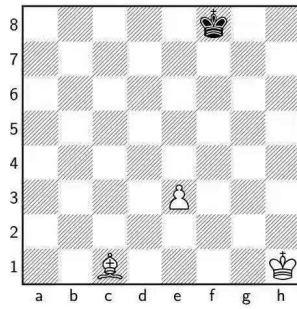


CHES

Beginner Chess Warmup

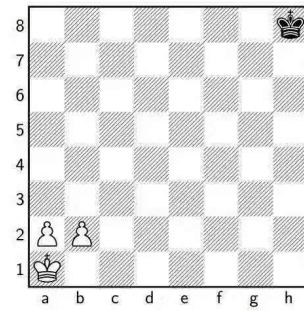


It's White's move. How many moves with the **bishop** can White make from this position?

- ☐ 1
- ☐ 2
- ☐ 3
- ☐ 4

CHES

Beginner Chess Warmup

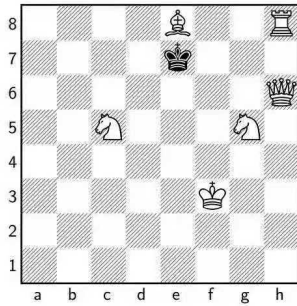


If it's White's move, how many different moves does White have available with a **pawn** on this particular board?

- ☐ 1
- ☐ 2
- ☐ 3
- ☐ 4

CHES

Beginner Chess Warmup



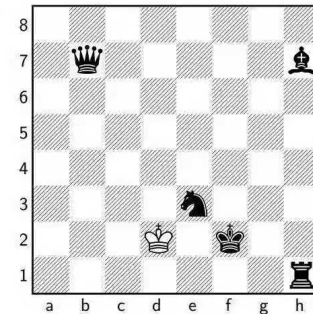
It is Black's turn to move. Is this situation stalemate?

(NOTE: Stalemate is when a player cannot make any legal move at all. Then the game is a tie.)

- ☐ Yes
- ☐ No

CHES

Beginner Chess Warmup



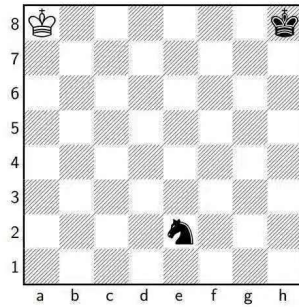
It is Black's turn to move. What piece should Black move such that Black achieves checkmate immediately?

(In short: Black to move, mate in one. "Mate" is always short for checkmate, not stalemate.)

- ☐ Rook
- ☐ Bishop
- ☐ Knight
- ☐ Queen

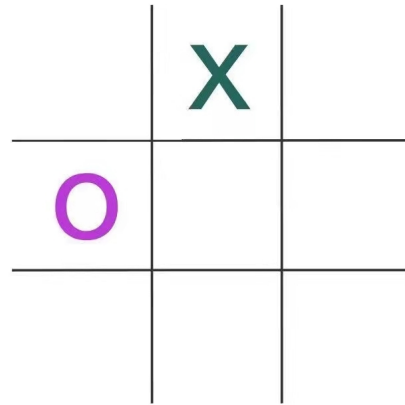
CHESS

Beginner Chess Warmup



It is Black's turn. How many different moves are possible with the **knight**?

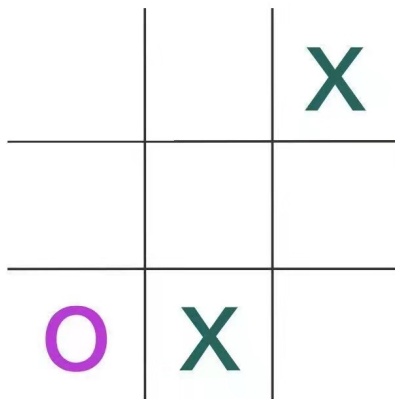
- ☐ 5
- ☐ 6
- ☐ 7
- ☐ 8



It is X's turn. Can X win?

(NOTE: Unless stated otherwise, every problem in this quiz will assume optimal play.)

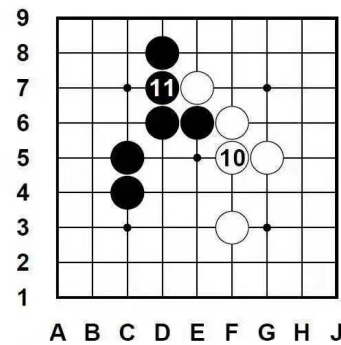
- ☐ Yes
- ☐ No



It is O's turn. Can O win?

(NOTE: Unless stated otherwise, every problem in this quiz will assume optimal play.)

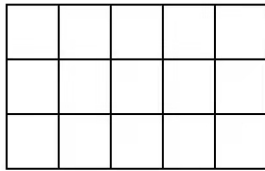
- ☐ Yes
- ☐ No



White and Black are placing stones game of gomoku (five-in-a-row). Five connected stones of the same color in a row, column, or diagonal win.

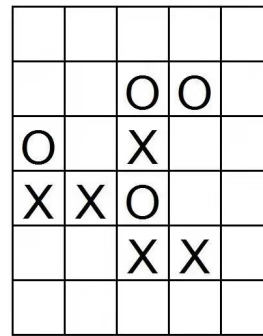
The last two moves are shown; it is White's move. Where can White play to win?

- ☐ f4
- ☐ e5
- ☐ h4



How many squares would need to be removed from a 5 by 3 sized board to ensure 3-in-a-row is impossible? (Play is not necessarily optimal!)

- ☐ 5
- ☐ 6
- ☐ 7
- ☐ 8



In this game four-in-a-row wins. It is O's turn. Where should O move to win?

- ☐ The first row
- ☐ The second row
- ☐ The third row